

Granada Center

The Granada Center might be the largest mall in Riyadh, at a size of 460,000m², and with a car park that holds 4500. Located on the outskirts of Riyadh, fairly close to the King Khaled International airport, it is an exquisite place to shop with everything that you'll need.

Shurjoint was specified for the Fire Protection and Chilled Water System. The grooved system's unique ability to accommodate the tight spaces and seismic movement made it the natural choice for this challenging project.



location

Riyadh, K.S.A.



year

2005

application

Fire protection

productline

VSH Shurjoint

architect

Building

Granada Center

location

Riyadh, K.S.A.



year

2005

application

Fire protection

productline

VSH Shurjoint

architect

Building



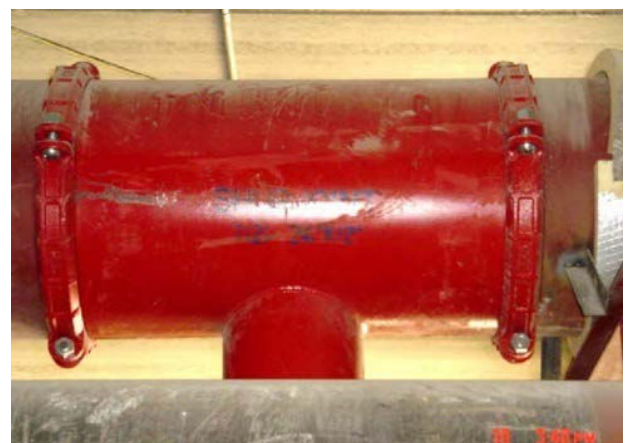
24" Chilled Water Lines



24" Dia Chilled Water Lines- inside Pump Room



Granada Center- 24" Elbow 90 Degree Model 7110



Model #7121 Reducing Tee, 24" x 12"