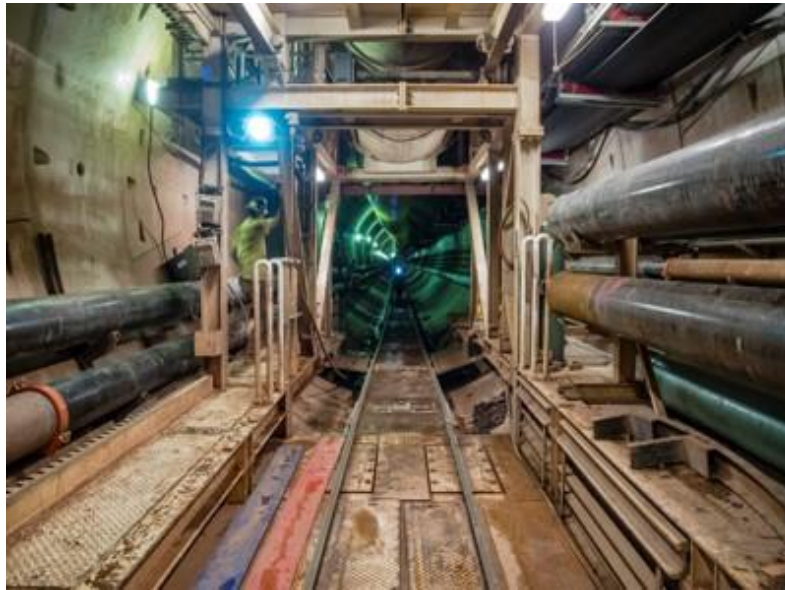


Lake Mead Water Intake

This is an enormous project involving a tunnel boring machine chewing through solid rock underneath Lake Mead and an intake structure 2.5 miles offshore. More than 1,000 concrete truck loads were transported to the intake site on 143 barge trips.

Shurjoint Ring Joint products were used on this project's bentonite supply for tunnel boring machine and removal of slurry. In this project, Shurjoint products result in better performance, longer service life, and easy access to piping components.



location

Las Vegas, NV

U.S.A



year

2014

application

HVAC

product line

VSH Shurjoint

architect

Industrial