

841 COMPANION FLANGE



For pressure rating, listing, and approval information, refer to data sheet or visit SHURJOINT website www.shurjoint.com for details or contact your SHURJOINT representatives.

The Model 841 is a traditional companion flange used for transition from a flange to a threaded piping system.

Material to ASTM A536 Gr. 65-45-12 ductile iron, dimensions to ANSI B16.42 Class 150, threads to ANSI B1.20.1 NPT, black or hot-dipped galvanized (option) finish.

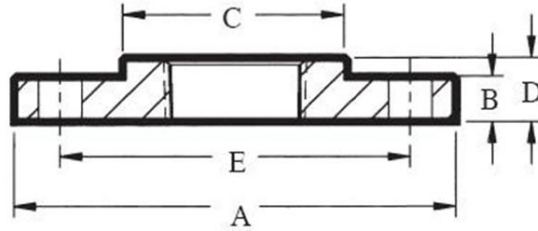
Pressure-Temperature Rating Companion Flanges (ANSI B16.42)

Nom. Rating	Working Pressure (W.O.G.) @150°F / @65°C	Working Pressure Saturated Steam
Class 150	250 psi / 17 Bar	150 psi (10 Bar)

*Proof test pressure: 1.5 times the working pressure, non-shock cold water.

material specification

- **Body:**
Ductile Iron to ASTM A536, Gr. 65-45-12, min. tensile strength 65,000 psi (448 MPa).
- **Threads:**
ANSI B1.20.1 NPT.
- **Body coating:**
Black (bare metal) with thin rust-proof oil.
 - Hot dip galvanized (optional)
 - Electro-zinc plated (optional)



Model 841 Companion Flange

Nominal Pipe Size	Pipe O.D.	Diameter of flange "A"	Thickness of flange "B"	Diameter of hub "C"	Length of hub "D"	Bolt Circle dia. "E"	Number of Bolts	Bolts Size	Weight
in	in	in	in	in	in	in		in	lbs
mm	mm	mm	mm	mm	mm	mm			Kg
1	1.315	4.25	0.56	1.94	0.69	3.12	4	½ x 2.25	1.54
25	33.4	108	14	49	18	79	4	---	0.7
1¼	1.660	4.62	0.62	2.31	0.81	3.50	4	½ x 2.50	1.94
32	42.2	117	16	59	21	89	4	---	0.9
1½	1.900	5.00	0.69	2.56	0.88	3.88	4	½ x 2.50	2.29
40	48.3	127	18	65	22	99	4	---	1.0
2	2.375	6.00	0.75	3.06	1.00	4.75	4	⅝ x 2.75	4.18
50	60.3	152	19	78	25	121	4	---	1.9
2½	2.875	7.00	0.88	3.56	1.12	5.50	4	⅝ x 3.00	5.83
65	73.0	178	22	90	28	140	4	---	2.6
3	3.500	7.50	0.94	4.25	1.19	6.00	4	⅝ x 3.25	6.60
80	88.9	191	24	108	30	152	4	---	3.0
4	4.500	9.00	0.94	5.31	1.31	7.50	8	⅝ x 3.25	11.75
100	114.3	229	24	135	33	191	8	---	5.3
6	6.625	11.00	1.00	7.56	1.56	9.50	8	¾ x 3.50	16.50
150	168.3	279	25	192	40	241	8	---	7.5
8	8.625	13.50	1.12	9.69	1.75	11.75	8	¾ x 3.75	25.98
200	219.1	343	28	246	44	298	8	---	11.8

General note

- *Pressure Ratings* for fittings conform to the working pressure of the coupling used to join the system.
- Listed and or Approved Pressures are pressure ratings for fire protection systems, tested and approved by various approval bodies. Please always refer to the latest approval data posted on the Shurjoint website.
- Field Joint Test: For one time, only the system may be tested hydrostatically at 1½ times the maximum working pressure listed (AWWA C606 5.2.3).
- Warning: Piping systems must always be depressurized and drained before attempting disassembly and or removal of any components.
- The 10 Year Limited Warranty applies to manufacturing defects only and does not cover severe service/temperature applications or wear parts.
- Shurjoint reserves the right to change specifications, designs and or standard without notice and without incurring any obligations.